

Technical data sheet

225S-024T-05-P5
Rotary actuator

Description

Rotary actuator for adjusting dampers in HVAC installations

- Running time 20...35 s / 90°
- Torque 5 Nm
- Nominal voltage 24 VAC/DC
- Control 2-/3-point
- Feedback potentiometer P5 = 5 kΩ
- Damper size up to approx. 1 m²
- Shaft coupling clamp
∅ 8-12 mm / Ø 8-16 mm



Technical data

Electrical data	Nominal voltage	24 VAC/DC, 50/60 Hz
	Nominal voltage range	19...29 VAC/DC
	Power consumption motor (motion)	2,0 W
	Power consumption standby (end position)	1,0 W
	Wire sizing	3,5 VA
	Control	2-/3-point
	Feedback signal	potentiometer P5 = 5 kΩ
	Auxiliary switch	-
	Contact load	-
	Switching point	-
	Connection motor	screw terminals, 3-pin 0,5...1,5 mm ²
	Connection feedback potentiometer	screw terminals, 3-pin 0,5...1,5 mm ²
	Connection auxiliary switch	-
	Connection GUAC	-
Functional data	Torque	5 Nm

Technical data

Functional data	Damper size	up to approx. 1 m ²
	Synchronized speed	-
	Direction of rotation	selected by switch
	Manual override	gearing latch disengaged with pushbutton, self-resetting
	Angle of rotation	0°...max. 95° can be limited with adjustable mechanical end stops
	Running time	20...35 s / 90° (load-dependent)
	Sound power level	< 45 dB(A)
	Shaft coupling	clamp \varnothing 8-12 mm / \varnothing 8-16 mm
	Position indication	mechanical with pointer
	Service life	> 60 000 cycles (0°...95°...0°)
Safety	Protection class	III (safety extra-low voltage)
	Degree of protection	IP 52 (cable port downwards)
	Cable mounting type	
	EMC	CE (2014/30/EU)
	LVD	CE (2014/35/EU)
	RoHS	CE (2011/65/EU - 2015/863/EU - 2017/2102/EU)
	Mode of operation	Typ 1 (EN 60730-1)
	Rated impulse voltage supply / control	0,8 kV (EN 60730-1)
	Control pollution degree	3 (EN 60730-1)
	Ambient temperature normal operation	-30°C...+50°C
	Storage temperature	-30°C...+80°C
	Ambient humidity	5...95% r.H., non condensating (EN 60730-1)
	Maintenance	maintenance free
Dimensions / Weight	Dimensions	145 x 70 x 61 mm
	Weight	500 g

Functionality / Properties

Operating mode

2 point:

Connect power supply to terminal 1+2, actuator drives to position 1. Is also terminal 3 connected to the power supply, actuator drives to position 0.

3 point:

Connect power supply to terminal 1+2, actuator drives to position 1. Is terminal 1+3 connected to the power supply, actuator drives to position 0.

The actuator is overload-proof, requires no limit switches and automatically stops, when the end stop is reached.

Direct mounting

Simple direct mounting on the damper shaft with a clamp, protection against rotating with enclosed anti-rotation lock or rather at intended attachment points.

Manual override

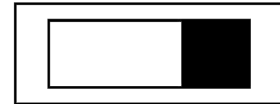
Manual override with self-resetting pushbutton possible (the gear is disengaged as long as the button is pressed).

Mode switch

DIP switch under the case cover

R / CW: rotary direction right / clockwise

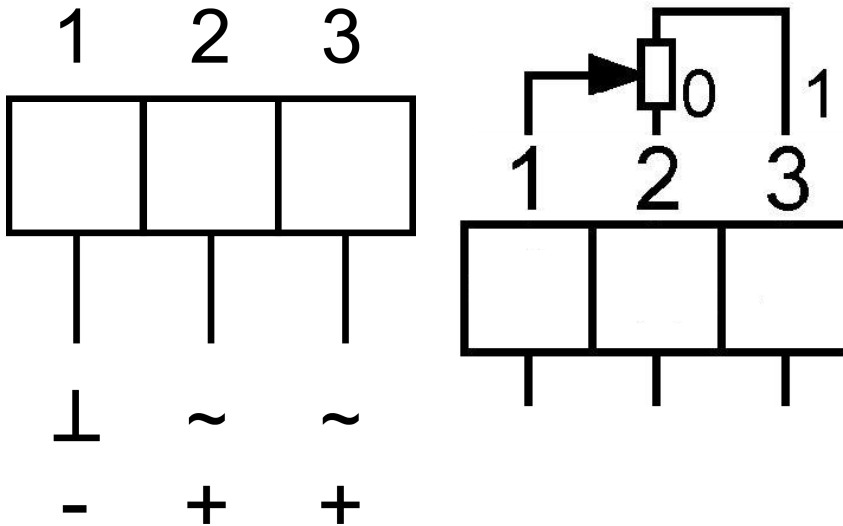
L / CWW: rotary direction left / counter clockwise



L / CCW

R / CW

Connector / Security Note



Safety remarks

- Connect via safety isolation transformer!
- The device is not allowed to be used outside the specified field of application, especially in airplanes.
- It may only be installed by suitably trained personnel. Any legal regulations or regulations issued by authorities must be observed during assembly.
- The device may only be opened at the manufacturer's site.
- Cables must not be removed from the device.
- The cable of this actuator cannot be replaced. If the cable is damaged, the actuator should be scrapped.
- The device is not allowed to be disposed of as household refuse. All locally valid regulations and requirements must be observed.
- When calculating the required torque, the specifications supplied by the damper manufacturer's (cross-section, design, installation site), and the air flow conditions must be observed.

Technical Drawing

