



Pressure transmitter

Huba Control

Pressure transmitter for refrigeration applications

Type 560

Huba Control is expanding its product family of pressure transmitters with a new product series for OEM customers in the refrigeration sector.

The 560 features the well known Huba Control stainless steel sensor technology that has proven itself millions of times over. Thanks to the hermetically welded construction, the 560 is suitable for known refrigerants such as ammonia and CO₂ as well as other refrigerants from safety classes A2L and A3. This gives you great flexibility within your applications.

With a wide range of variants, such as the copper soldering tube, the pressure transmitter type 560 can be optimally integrated into your application.



Pressure range

-1 ... 7 bar

0 ... 10 – 150 bar

- + Compact and robust design
- + Hermetically sealed in accordance with EN ISO14903:2017 tested during manufacture by means of 100% helium leakage control
- + Due to the hermetically welded construction, no elastomer seals are required
- + Two colour versions of connectors for easy identification of pressure ranges within an application
- + Rated according to DIN EN 60335-2-40
- + Copper soldering tube for optimal integration into your copper pipe system

Technical overview

Pressure range

Relative -1 ... 7 bar / 0 ... 10 – 150 bar

Operating conditions

| | | | |
|--------------------|---------|--------------------|----------------------|
| Medium | | Refrigerants | |
| Temperature | Medium | ration. 10 ... 90% | -40 ... +125 °C |
| | Medium | 4 ... 20 mA | -40 ... +120 °C |
| | Ambient | | -40 ... +85 °C |
| | Storage | | -40 ... +100 °C |
| Tolerable overload | | | 3 x fs ¹⁾ |
| Rupture pressure | | | 6 x fs ²⁾ |

Materials

| | | |
|--|----------------------|-----------------------------------|
| Cover | | Stainless steel 1.4301 / 1.4404 |
| Plug accommodation | | Polyacrylamide 50% GF UL94 V0 |
| Materials in contact with medium ³⁾ | Thread | Stainless steel 1.4301 / AISI 304 |
| | Soldering connection | CuDHP / CW024A |
| | Sensor | Stainless steel 1.4016 |
| | | |

Electrical overview

| | Output | Power supply | Load | Current consumption |
|------------------------------|--|------------------|---|---------------------|
| 2 wire | 4 ... 20 mA | 8 ... 32 VDC | < $\frac{\text{supply voltage} - 8V}{600A}$ | < 23 mA |
| 3 wire | ration. 10 ... 90% | 2.97 ... 5.5 VDC | >10 kOhm / < 10 nF | < 7 mA |
| Polarity reversal protection | Short circuit proof and protected against polarity reversal. Each connection is protected against crossover up to max. supply voltage. | | | |
| Insulation voltage | 500 VDC | | | |

Dynamic response

| | | |
|---------------|--------------------|--------------------|
| Response time | ration. 10 ... 90% | < 5 ms (typ. 2 ms) |
| | 4 ... 20 mA | < 5 ms (typ. 2 ms) |

Electrical connection

| | Protection standard | Protection class |
|---|--------------------------------------|---------------------|
| Metri Pack 150 P2S Series ⁴⁾ | (two coloured design, black or grey) | IP 67 ⁵⁾ |
| Swift connector | (two coloured design, black or grey) | IP 67 ⁵⁾ |

Pressure connection

| | | |
|----------------|------------------------------------|---|
| Inside thread | $\frac{7}{16}$ - 20 UNF | sealing cone 45° and Schrader |
| | $\frac{7}{16}$ - 20 UNF | sealing cone 45° |
| Outside thread | $\frac{1}{4}$ -18 NPT | sealing in thread |
| | G $\frac{1}{4}$ | sealed at back DIN EN ISO 1179-2 with profile seal ring in FKM |
| | G $\frac{1}{4}$ | sealed at back DIN EN ISO 1179-2 with profile seal ring in EDPM |
| | Soldering connection ⁶⁾ | Tube Ø 6 mm |

Installation arrangement

Unrestricted

Tests / Admissions

| | |
|--|---|
| UL | ANSI/UL 61010-1 acc. E325110 |
| Electromagnetic compatibility | CE-Conform acc. EN 61326-2-3:2013 |
| Hermetic sealing | Tested according to EN ISO 14903:2017 |
| Surface temperature during operation and individual faults | Assessment according to DIN EN 60335-2-40 |

Weight

~ 90 g

Packaging (recyclable)

Multiple packaging in cardboard (25 pcs.)
min. order quantity 100 pcs.

Accuracy

| Parameter | Unit | typic. | max. |
|--|------|--------|------|
| Characteristic line acc. IEC 61298-2 ⁷⁾ | % FS | 0.5 | 1 |
| Resolution | % FS | 0.1 | |
| Thermal characteristic -20 ... +85 °C | % FS | 1 | 1.5 |
| Thermal characteristic -40 ... +125 °C | % FS | 1.5 | 2 |
| Long term stability acc. IEC 61298-2 | % FS | 0.2 | |

Test conditions: 25 °C, 45% rF

¹⁾ Soldering tube with pressure range ≥ 90 bar: max. 200 bar with media contact. ⁴⁾ Delivery without female connector. approval

²⁾ Soldering tube with pressure range ≥ 90 bar: max. 600 bar

³⁾ The application medium must be suitable for the materials of the pressure transmitter

⁵⁾ The specified protection class only applies when connected with a matching plug of the corresponding protection class; IP test not part of UL61010-1

⁶⁾ Soldering tube with end stop, without end stop on request.

⁷⁾ incl. zero point, full scale, linearity, hysteresis and repeatability

| | | | | 1 | 2 | 3 | 4 | 5 | 6 | 7 | 8 | 9 | 10 | 11 |
|--|---|---|--------------------------|-------------|---|---|---|-----|---|---|---|---|----|----|
| Order code selection table in bar | | | | 560. | | | | | | | | | | |
| | | | | X | X | X | X | X | X | X | X | X | X | X |
| Pressure range (relative) | -1 ... 7 bar | | | 9 | 1 | 1 | | 0,5 | | | | | | |
| | 0 ... 10 bar | | | 9 | 1 | 2 | | 0,5 | | | | | | |
| | 0 ... 16 bar | | | 9 | 1 | 3 | | 0,5 | | | | | | |
| | 0 ... 18 bar | | | 9 | 1 | 4 | | 0,5 | | | | | | |
| | 0 ... 30 bar | | | 9 | 1 | 5 | | | | | | | | |
| | 0 ... 45 bar | | | 9 | 1 | 6 | | | | | | | | |
| | 0 ... 50 bar | | | 9 | 1 | 7 | | | | | | | | |
| | 0 ... 60 bar | | | 9 | 1 | 8 | | | | | | | | |
| | 0 ... 90 bar | | | 9 | 1 | 9 | | | | | | | | |
| | 0 ... 150 bar | | | 9 | 1 | A | | | | | | | | |
| Output / power supply | Ratiom. 10 ... 90% | 2.97 ... 5.5 VDC | 3 wire | | | | | 7 | | | | | | |
| | Analog 4 ... 20 mA | 8 ... 32 VDC | 2 wire | | | | | 3 | | | | | | |
| Electrical connection | Swift connector (black) | 2L: IN=1 / OUT=3 | 3L: IN=1 / OUT=2 / GND=3 | | | | | 0 | | | | | | |
| | Swift connector (grey) | 2L: IN=1 / OUT=3 | 3L: IN=1 / OUT=2 / GND=3 | | | | | A | | | | | | |
| | Metri Pack 150 P2S (black) ¹⁾ | 2L: IN=B / OUT=A | 3L: IN=B / OUT=C / GND=A | | | | | 5 | | | | | | |
| | Metri Pack 150 P2S (grey) ¹⁾ | 2L: IN=B / OUT=A | 3L: IN=B / OUT=C / GND=A | | | | | B | | | | | | |
| Pressure connection | Inside thread | 7/16-20 UNF with Schrader | | | | | | | K | 0 | 0 | 0 | 0 | |
| | | 7/16-20 UNF | | | | | | | 2 | 0 | 0 | 0 | 0 | |
| | Outside thread | 1/4 -18 NPT | | | | | | | Y | 0 | 0 | 0 | 0 | |
| | | G 1/4 sealed at back DIN EN ISO 1179-2 with profile seal ring in FKM | | | | | | | 4 | A | 0 | 0 | 0 | |
| | | G 1/4 sealed at back DIN EN ISO 1179-2 with profile seal ring in EPDM | | | | | | | 4 | B | 0 | 0 | 0 | |
| Soldering connection | Tube Ø 6mm | L = 35 mm | | | | | | W | 0 | 0 | 0 | 0 | | |
| Pressure range variation (optional) | Indicate W and state range on order (e.g. W -1 ... +3 bar/Out 10 ... 90%) | | | | | | | | | | | | | W |

| | | | | 1 | 2 | 3 | 4 | 5 | 6 | 7 | 8 | 9 | 10 | 11 |
|--|---|---|--------------------------|-------------|---|---|---|-----|---|---|---|---|----|----|
| Order code selection table in psi | | | | 560. | | | | | | | | | | |
| | | | | X | X | X | X | X | X | X | X | X | X | X |
| Pressure range (relative) | -15 ... 100 psi | | | 9 | A | 1 | | 0,5 | | | | | | |
| | 0 ... 145 psi | | | 9 | A | 2 | | 0,5 | | | | | | |
| | 0 ... 230 psi | | | 9 | A | 3 | | 0,5 | | | | | | |
| | 0 ... 260 psi | | | 9 | A | 4 | | 0,5 | | | | | | |
| | 0 ... 435 psi | | | 9 | A | 5 | | | | | | | | |
| | 0 ... 650 psi | | | 9 | A | 6 | | | | | | | | |
| | 0 ... 725 psi | | | 9 | A | 7 | | | | | | | | |
| | 0 ... 870 psi | | | 9 | A | 8 | | | | | | | | |
| | 0 ... 1300 psi | | | 9 | A | 9 | | | | | | | | |
| | 0 ... 2170 psi | | | 9 | A | A | | | | | | | | |
| Output / power supply | Ratiom. 10 ... 90% | 2.97 ... 5.5 VDC | 3 wire | | | | | 7 | | | | | | |
| | Analog 4 ... 20 mA | 8 ... 32 VDC | 2 wire | | | | | 3 | | | | | | |
| Electrical connection | Swift connector (black) | 2L: IN=1 / OUT=3 | 3L: IN=1 / OUT=2 / GND=3 | | | | | 0 | | | | | | |
| | Swift connector (grey) | 2L: IN=1 / OUT=3 | 3L: IN=1 / OUT=2 / GND=3 | | | | | A | | | | | | |
| | Metri Pack 150 P2S (black) ¹⁾ | 2L: IN=B / OUT=A | 3L: IN=B / OUT=C / GND=A | | | | | 5 | | | | | | |
| | Metri Pack 150 P2S (grey) ¹⁾ | 2L: IN=B / OUT=A | 3L: IN=B / OUT=C / GND=A | | | | | B | | | | | | |
| Pressure connection | Inside thread | 7/16-20 UNF with Schrader | | | | | | | K | 0 | 0 | 0 | 0 | |
| | | 7/16-20 UNF | | | | | | | 2 | 0 | 0 | 0 | 0 | |
| | Outside thread | 1/4 -18 NPT | | | | | | | Y | 0 | 0 | 0 | 0 | |
| | | G 1/4 sealed at back DIN EN ISO 1179-2 with profile seal ring in FKM | | | | | | | 4 | A | 0 | 0 | 0 | |
| | | G 1/4 sealed at back DIN EN ISO 1179-2 with profile seal ring in EPDM | | | | | | | 4 | B | 0 | 0 | 0 | |
| Soldering connection | Tube Ø 6mm | L = 35 mm | | | | | | W | 0 | 0 | 0 | 0 | | |
| Pressure range variation (optional) | Indicate W and state range on order (e.g. W -15 ... +45 psi/Out 10 ... 90%) | | | | | | | | | | | | | W |

Variation

Variations

| | |
|----------------------------------|---|
| Deviation factor | 0.33 ... 1.33 (must not be undercut or exceeded) |
| Accuracy | Standard accuracy / variation factor (for variation factor < 1) |
| Lowest starting point (relative) | -1 bar |

Ex. 1: Sensor with a measuring range of 0 ... 10 bar is to be calibrated to 0 ... 4 bar.

Deviation factor = $\frac{4 \text{ bar}}{10 \text{ bar}} = 0.4 \rightarrow$ ok, because the deviation factor is within 0.33 ... 1.33.

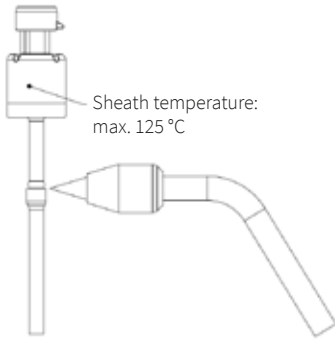
Ex. 2: Sensor with a measuring range of 0 ... 10 bar is to be calibrated to 0 ... 2 bar.

Deviation factor = $\frac{2 \text{ bar}}{10 \text{ bar}} = 0.2 \rightarrow$ cannot be synchronized, as the deviation factor is not within 0.33 ... 1.33.

¹⁾ Delivery without female connector

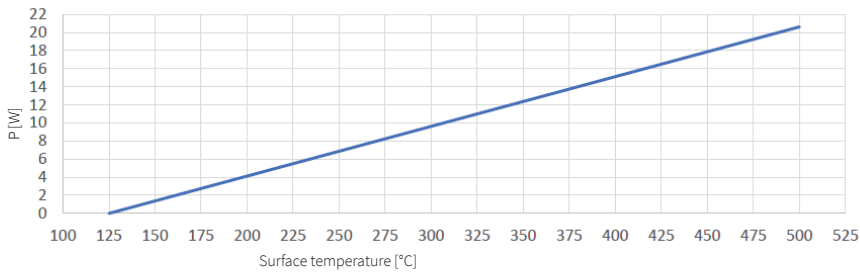
| | |
|---|--------|
| Set - Swift connector (female) (included in delivery) | 117312 |
| Set - Metri Pack 150 P2S Series (female) (3 wire) | 120345 |

Mounting instruction soldering

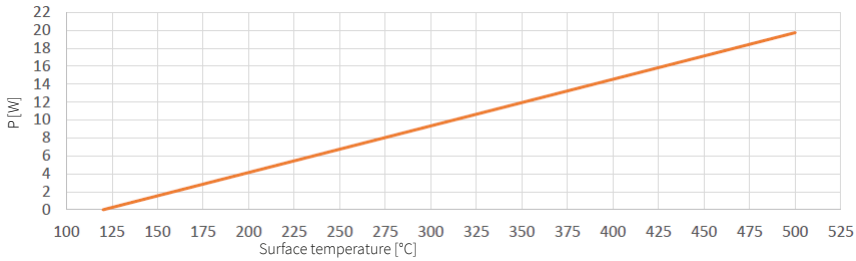


Surface temperature of the sensor in the event of a fault as a function of the supply power. Measured according to EN60335-2-40

Ratiometer 10 ... 90%



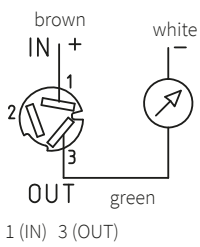
Analog 4 ... 20 mA



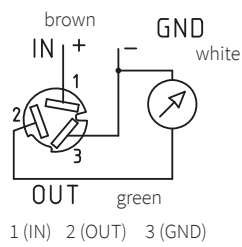
Electrical connections

Swift connector

2 wire

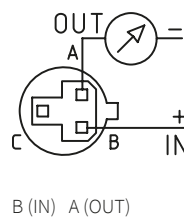


3 wire

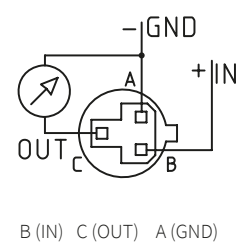


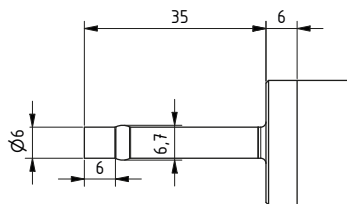
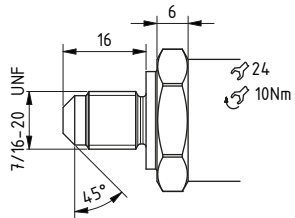
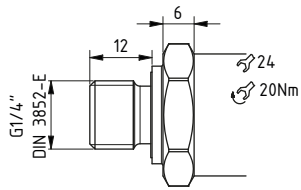
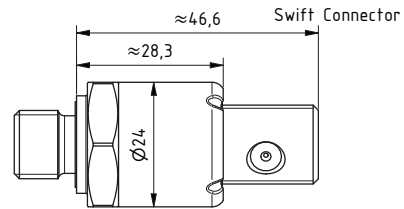
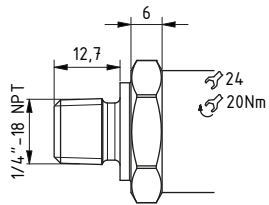
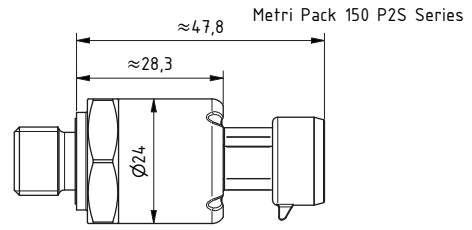
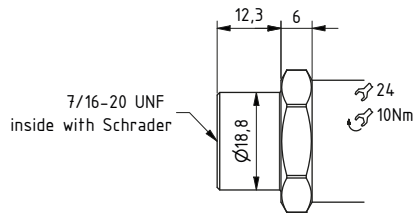
Metri Pack Series 150

2 wire



3 wire





Huba Control AG

Industriestrasse 17
5436 Würenlos, Switzerland
Tel. +41 56 436 82 00
info.ch@hubacontrol.com



Consultancy in your area
hubacontrol.com/en/worldwide

